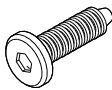
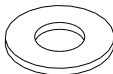
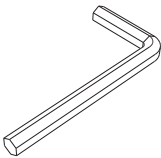


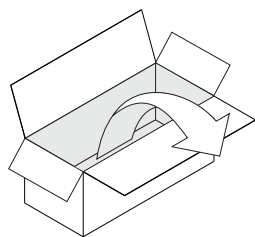
35155 SEQUENCE DINING TABLE

ASSEMBLY INSTRUCTIONS FOR DINING TABLE INSTALLATION



HARDWARE & TOOL ENCLOSED

 <p>JCBC SCREW M6x25 (6pcs)</p>	 <p>WASHER M6x18 (6pcs)</p>	 <p>ALLEN KEY</p>
--	--	--

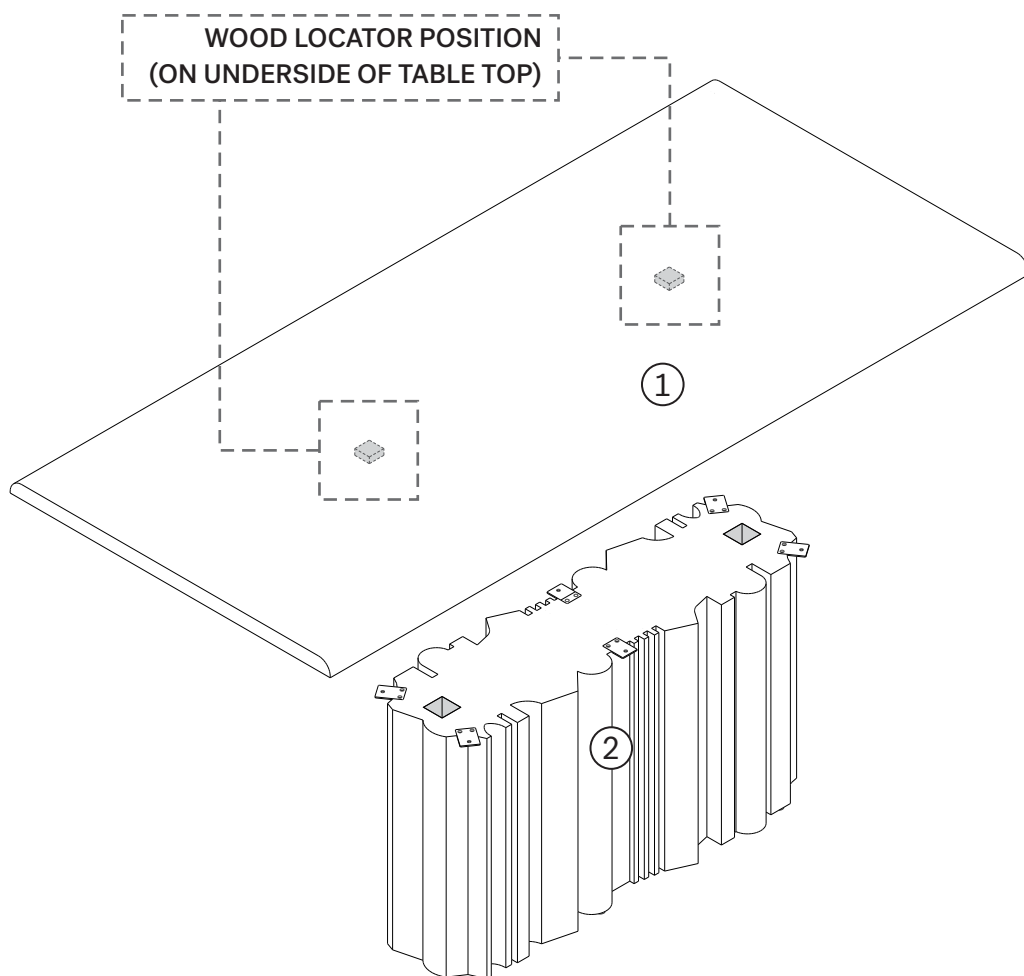


IN YOUR PACKAGE :

ASSEMBLY INSTRUCTIONS
HARDWARE (AS LISTED ABOVE)

PARTS TO BE INSTALLED

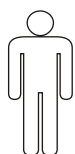
1. TABLE TOP (1 pc)
2. LEG BASE (1 pc)



SYMBOLS



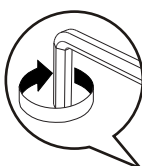
DIRECTION



NUMBER OF
PERSONS NEEDED

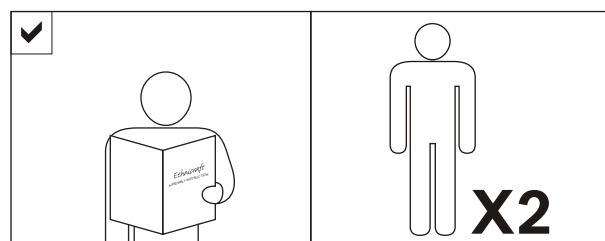


USE HAND



USE ALLEN KEY
TO TIGHTEN

NOTICE

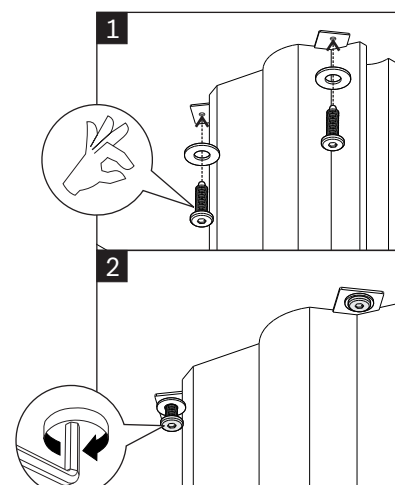
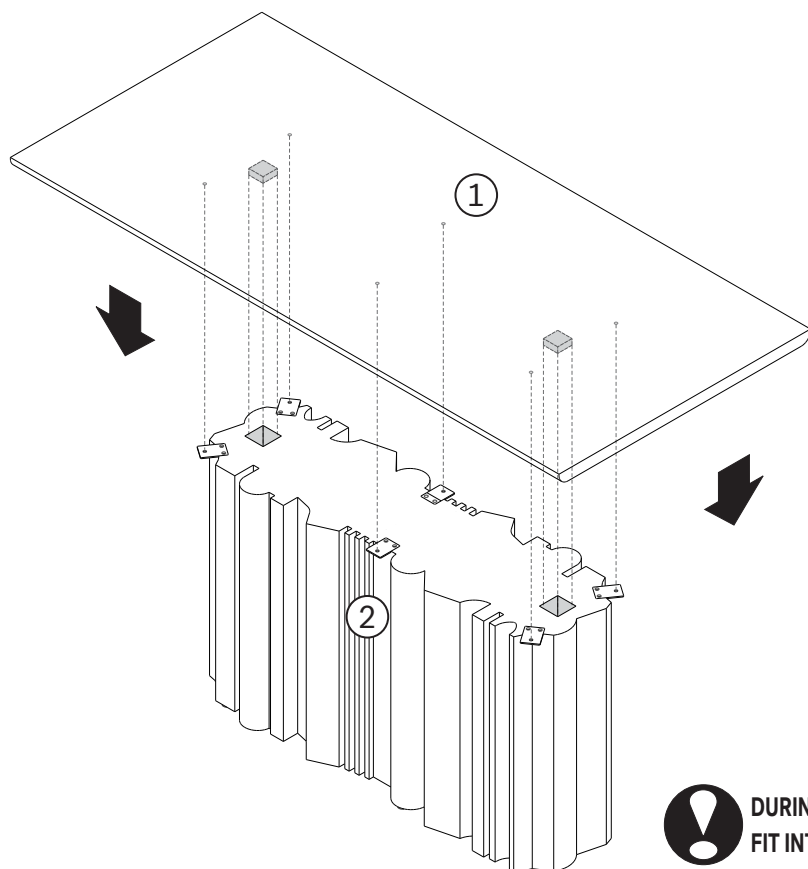


35155 SEQUENCE DINING TABLE

ASSEMBLY INSTRUCTIONS FOR DINING TABLE INSTALLATION



A ATTACHING TABLE TOP TO LEG BASE

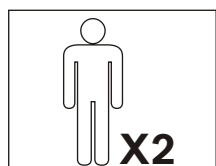


- USE WASHER M6x18 (6X)
- USE JCBC SCREW M6x25 (6X)
- TIGHTEN FULLY

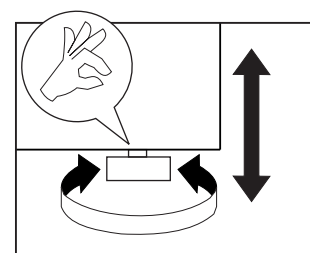
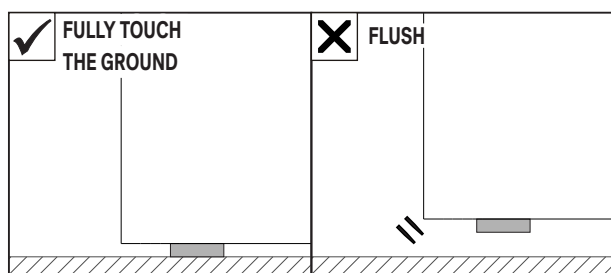
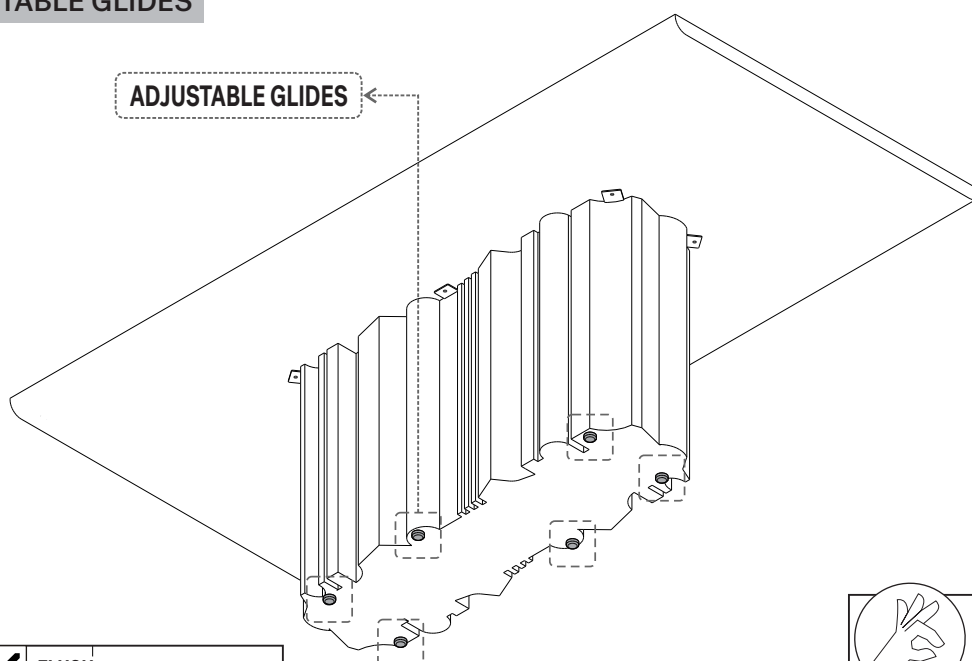


DURING PLACEMENT, ENSURE THE WOOD LOCATORS ARE ALIGN AND FIT INTO THE CORRESPONDING SLOTS ON THE LEG BASE

B MODIFY THE ADJUSTABLE GLIDES



ADJUSTABLE GLIDES



NOTE :
THIS IS A COMPULSORY ACTION TO MAKE SURE
ALL OF THE LEGS TOUCH THE GROUND!